



High Speed 0.3s Servo Barrier Gate with Altitude 1000M or Lower Compatibility

Our Product Introduction

for more products please visit us on automaticbarriersgates.com

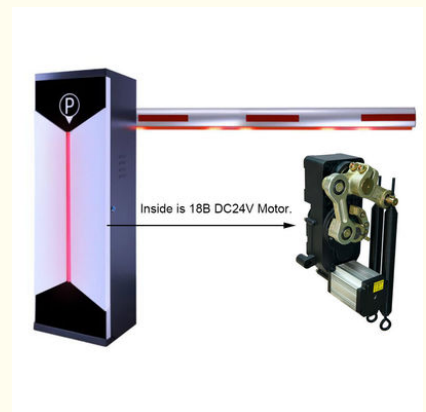
Basic Information

- Place of Origin: Guangdong, China
- Brand Name: CBG, CBG
- Model Number: 18B-19
- Price: \$360.00/sets 1-99 sets
- Supply Ability: 2000 Piece/Pieces per Month

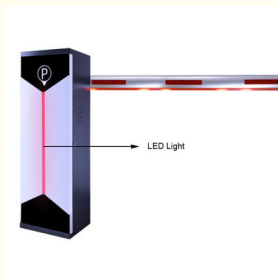


Product Specification

- Max Length Of Boom: 6 Meter
- Voltage: DC24V
- Insulation Class: F
- Warranty: 2 Years
- Operation Lifetime: ≥ 5 Million Times
- Output Power: 120W
- Feature: Durable
- Altitude: 1000M Or Lower
- Highlight: 1000m altitude barrier gate, 1000m automatic barrier gate, 0.3s Servo Barrier Gate



More Images



Product Description

Company Profile

Barrier openers are typically used in access areas where traffic needs to be regulated. Areas such as parking garages, toll roads, car washes, private roads, railway crossings, and security checkpoints are where most boom barrier openers will be. The length of the arm is generally anywhere from 6' (1.8 m) all the way up to 33' (10 m). Applications that need longer booms are places that need large, wide lanes for buses and trucks, such as a business driveway or an airport. Parking garages may only need smaller-length barrier arms since only one vehicle should be passing at a time.



Our advantages:

1. NO MOQ limit.
2. Customized LOGO.
3. 24 Hours delivery for stock
4. 2 Year warranties.

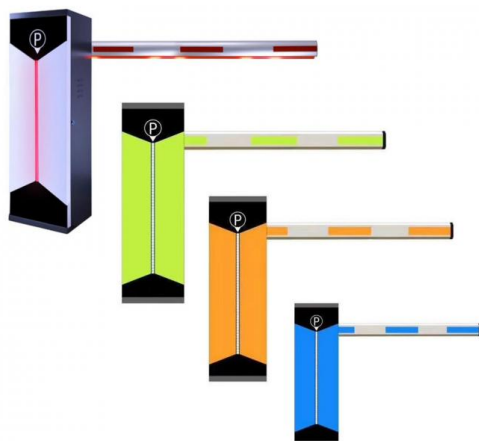
Products Description



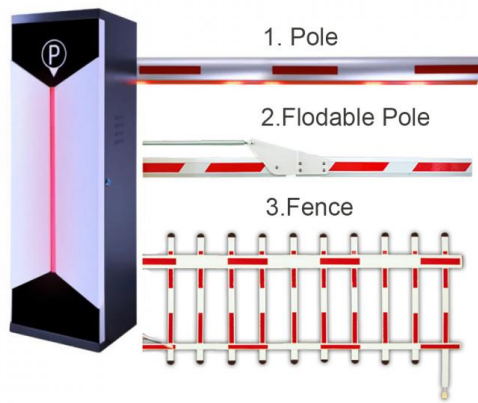
18B Motor Parameters

Voltage:DC24V	Output Efficiency:120W	Humidity:85% or lower
Insulation Class:F	Gate Operation Time:0.3-5S	Altitude:1000 Meter or lower
Current:6A	Operation Lifetime:>=5million times	Temperature Range:-40°C to +60°C (temperatures below -20°C require a heating element)

Applications: Generally suited for controlling gates leading to highways and expressways, as well as vehicle-plate reading systems for gated communities and commercial parking lots.



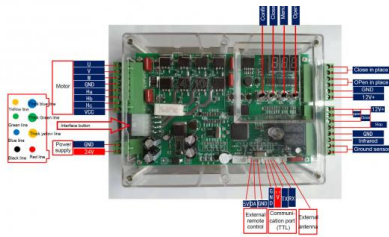
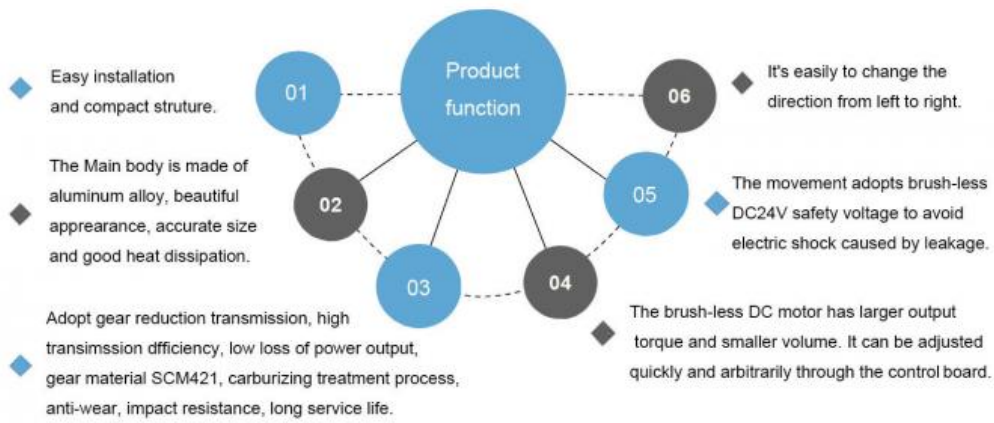
Different color to choose



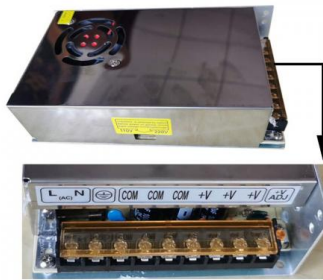
Max length of boom is 6 Meter

Interior structure





Control Board



Power Supply

Old and New Product's Difference



Before:

1) Worm gear, general appearance

2) The previous products use with Rv50 reducer and added the splint to compose the movement. The worm gear is a consumable product. After using a long time, there will be a large gap, the pole will be not stable and shake so will cause the gear reducer to grind.

3)The products mainly used with AC 220V motor, the fixed speed was not adjustable.

4) Open structure, a low degree of protection, easy to enter water.

5) AC220V.

6) During installation, needs to adjusted the magnet position to ensure the door opening angle. After a long time, the shaking will affect the limit position or the pole may be deviated downwards.



After:

1) Gear transmission structure, beautiful appearance, compact structure, strong overall sense.

2) The new products are tailor-made for this industry and the gear adopts the processing technology of worm grinding wheel grinding after heat treatment, fine rolling of hard alloy hob, etc., the accuracy grade \geq GB / T100951, 2-2001 7 level.

3)The new product uses with DC brushless motor to avoid the problem of carbon brush life. Adjustable speed.

4)The entire seal structure, high degree of protection (\geq IP55); have a rainproof capability.

5) DC24V(Safe voltage)

6) Installed the chassis, adjust the position automatically after power on, and adjust the angle of rising pole and falling pole at will.

The packaging of 18B unit motor



1.Put polyurethane foam inside



2.Cover with plastic and put the motor into the carton



3.Seal the carton with tape

Single net weight about : 43KG(Don't include the boom arm)

Single package carton size: 108.5X38X34CM Package Type: Carton or Wooden case

Factory View



Assembly equipment



Visit factory



Exhibition



Entreprise Qualification



CBG[®] Shenzhen Chengbang Electromechanical Industry Limited

☎ +8615017905059 ✉ mok_1szcb_cbg@163.com 🌐 automaticbarriersgates.com

Qiantou Xinxing Industrial Zone, Niushan community, Dongcheng District, Dongguan City