



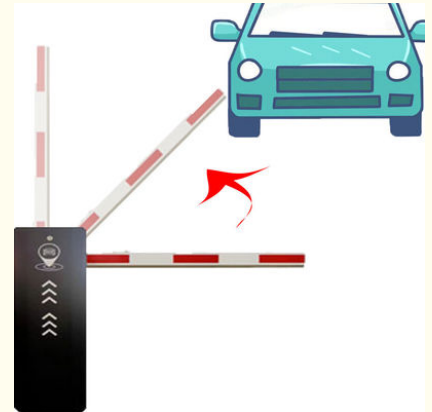
## 18B Parking Access Control Barrier Gate Operating Life 5 Million 140W

Our Product Introduction

for more products please visit us on [automaticbarriersgates.com](http://automaticbarriersgates.com)

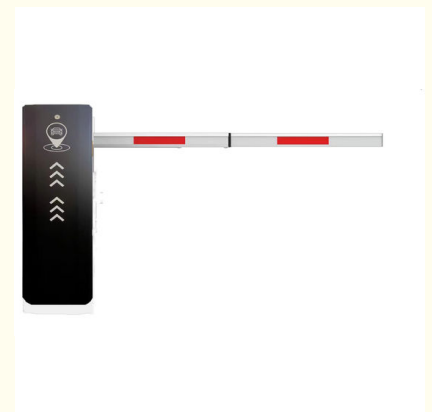
### Basic Information

- Place of Origin: Guangdong, China
- Brand Name: CBG
- Model Number: 18B-ZY
- Minimum Order Quantity: 2 pieces
- Price: \$360.00/pieces 2-99 pieces



### Product Specification

- Working Temperature: -30-60°C
- Power Supply: 140W
- Usage: Outdoor
- Boom Barrier Length: 1.5-6M
- Work Voltage: DC-24V
- Feature: Waterproof
- Operating Speed: 0.3-6s(Depend On Arm Length)
- Insulation Level: F
- Operating Life: >5 Million
- Warranty: 2 Years
- Highlight: Access Control Barrier 140W,  
5 Million Life Access Control Barrier,  
Parking Access Control Barrier



### More Images



## Product Description

### Operating Life 5 Million 18B Parking Access Control Barrier Gate

#### Product Description

##### Overview

18B

This barrier gate offer a reliable and efficient method to ensure pedestrian are allowed access to each area of space.

The compact structure makes it simple to construct a multiple lane set-up while the variety housing colors allows you to match this parking barrier perfectly to your parking lot.

#### Company Profile

##### Product description

1. The traffic barrier is widely used for the facilities of parking, traffic or toll system.
2. Arms can be chosen from 1.5 meters to 6 meters.
3. This type of barrier could match with direct boom( pole), fold boom Or fence boom..
4. When power off, we can lift up the boom arm by hand directly
5. All the process is soft without any noise and shaking.
6. Housing color: yellow,red ,blue,black,white (optional)
8. Boom arm direction can be chosen leftward to rightward.
8. Auto warming up,suitable for cold environment.

##### Application:

Office Buildings.

Shopping and mall Centers.

Vehicle Parks.

Distribution and Warehouse Facilities.

Commercial and Industrial Facilities.

Government Buildings.

Stations

##### Parameters

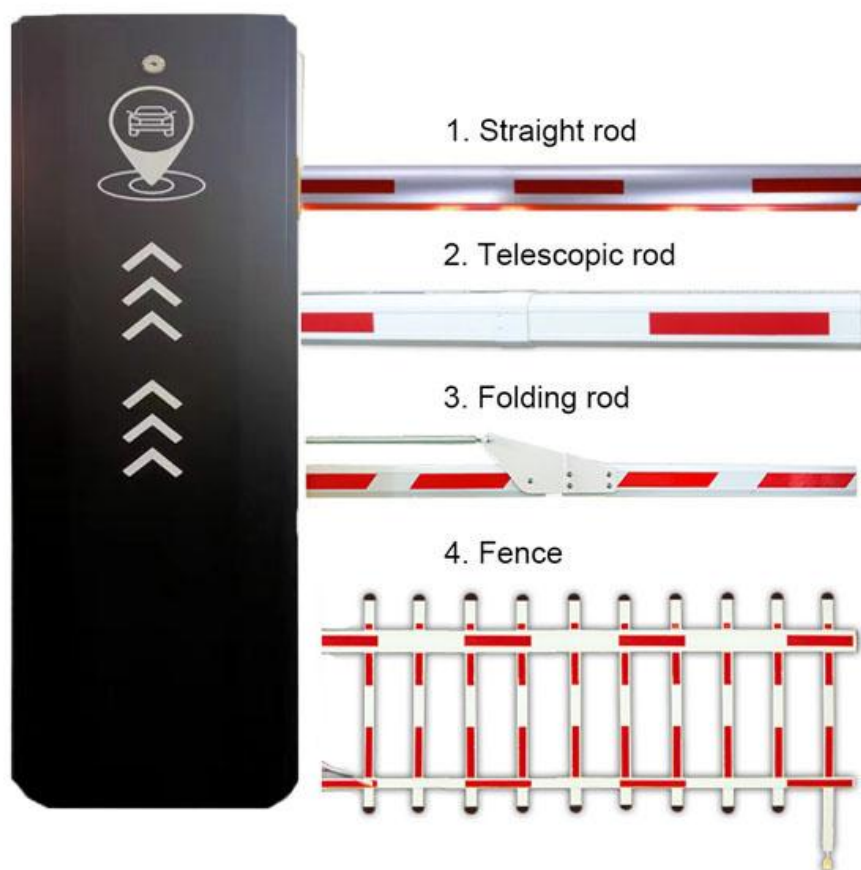
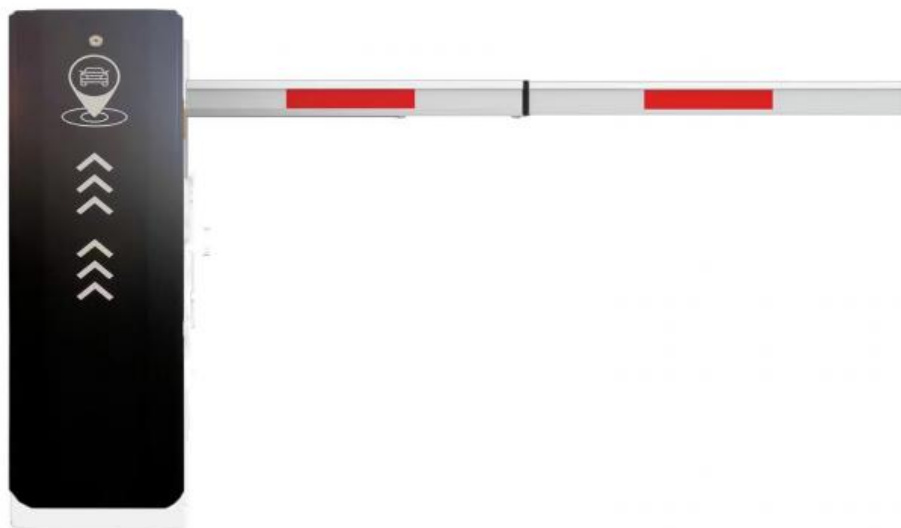


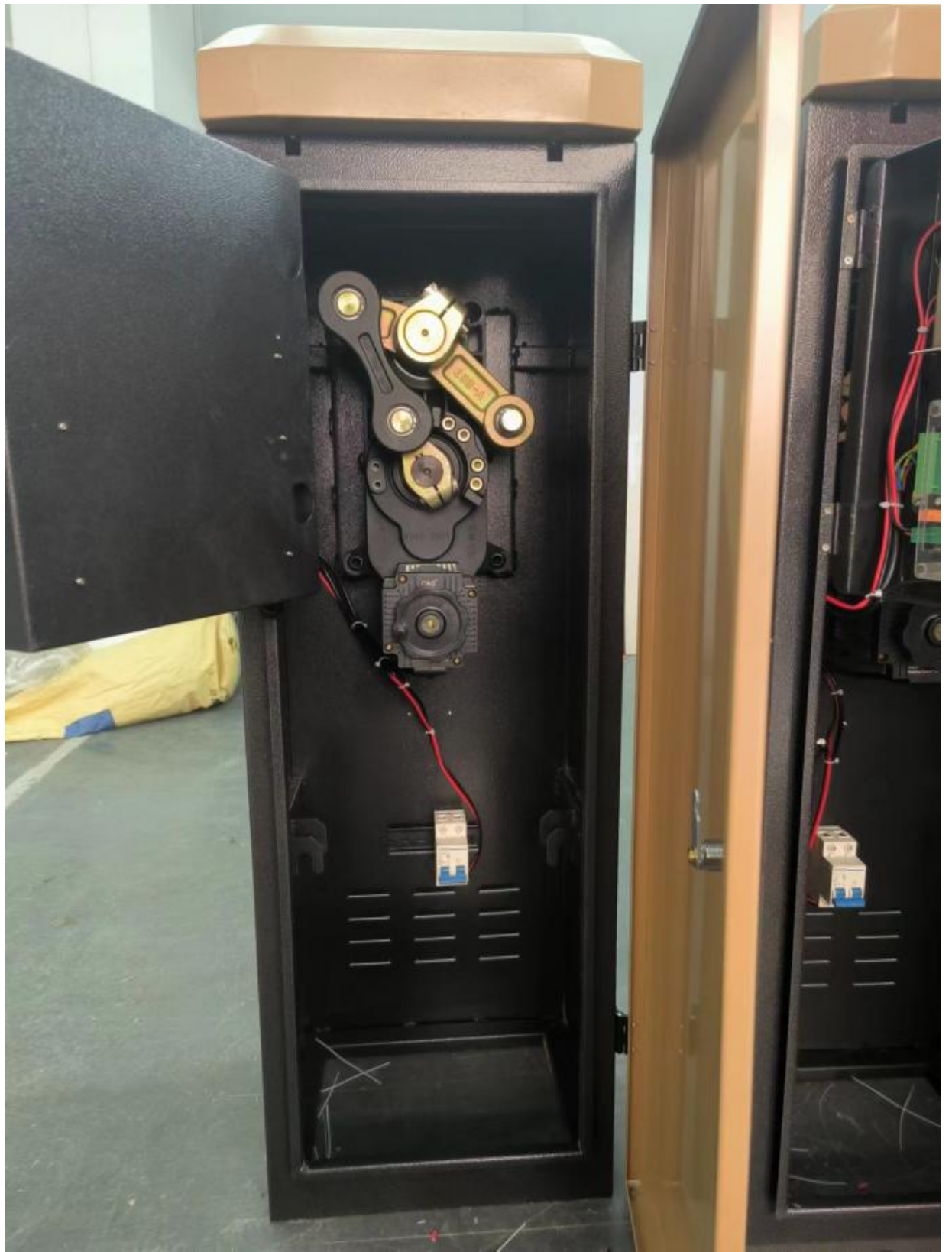
## Technical Parameters

|                         |               |
|-------------------------|---------------|
| Size                    | 300*250*990mm |
| Power supply            | DC 24V        |
| Open/close speed        | 0.3s to 6s    |
| Working temperature     | -30~60°C      |
| Rated power             | 140w          |
| Motor rated speed       | 1500r/min     |
| Humidity                | <=85%         |
| Remote control distance | 30 m          |
| Max boom length         | 6m            |
| External power          | 220V 50/60HZ  |

## Product picture





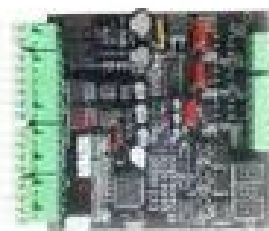
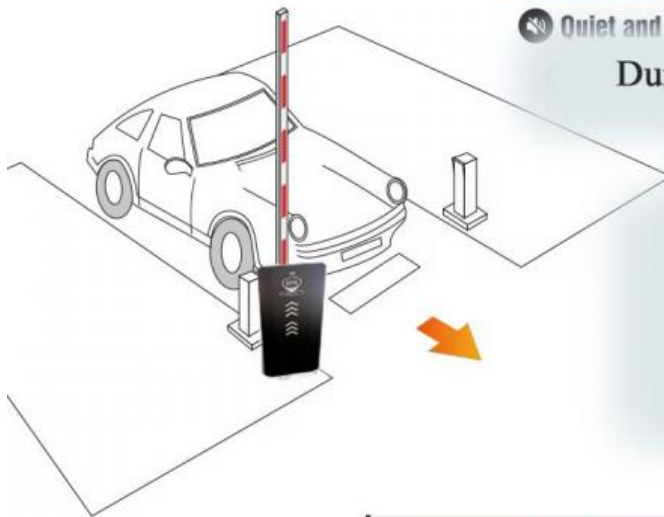


## Automatic Boom Barrier



Quiet and steady on opening and closing.

Durable,Cute Appearance



## Parking Barrier Gate



Easy Operation, Quiet,Steady



interior structure:



Big torque motor  
**Collision resistant motor**  
**Toll station motor**



**MCBF more 5 million times**

**Fast response**

Packing & Delivery

### The packaging of 18B unit motor



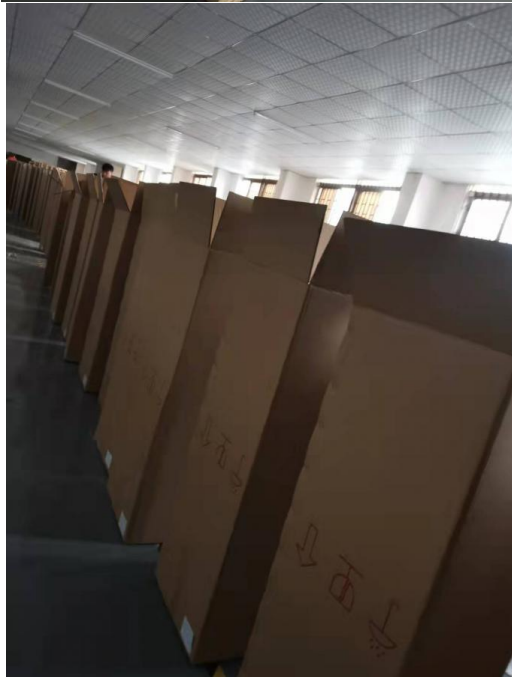
1.Put polyurethane foam inside



2.Cover with plastic and put the motor into the carton



3.Seal the carton with tape



To better ensure the safety of your goods, professional, environmentally friendly, convenient and efficient packaging services will be provided.

**Boom barrier projects**





**Visit factory**





**Exhibition**



Certification





## FAQ

FAQ1. who are we? We are based in Guangdong, China, start from 2010, sell to Africa (2.00%). There are total about 101-200 people in our office. 2. how can we guarantee quality? Always a pre-production sample before mass production; Always final inspection before shipment; 3. what can you buy from us? boom barrier, DC motor, gate road motor, car park barrier

4. Do you provide sample?

We can supply sample, but the customer have to pay the sample cost and courier cost.

5. why should you buy from us not from other suppliers? We're the manufacturer of boom barrier mechanism in China more than 10 years. The current is more than 100 staffs and 3 factories. We have professional equipment, assembly line production and quality assurance. We can customize according to customer needs. 6. what services can we provide? Accepted Delivery Terms: FOB, EXW Accepted Payment Currency: USD, EUR; Accepted Payment Type: T/T, PayPal, Cash;

**CBG<sup>®</sup>** Shenzhen Chengbang Electromechanical Industry Limited

 +8615017905059  mok\_1szcb\_cbg@163.com  automaticbarriersgates.com

Qiantou Xinxing Industrial Zone, Niushan community, Dongcheng District, Dongguan City