



## Construction Traffic Barrier Gate 1500r/Min For Outdoor Car Parking

Our Product Introduction

for more products please visit us on [automaticbarriersgates.com](http://automaticbarriersgates.com)

### Basic Information

- Place of Origin: Guangdong, China
- Brand Name: CBG
- Model Number: 18B-ZY
- Minimum Order Quantity: 2 pieces
- Price: \$360.00/pieces 2-99 pieces



### Product Specification

- Working Temperature: -30-60°C
- Power Supply: 140W
- Usage: Outdoor
- Boom Barrier Length: 1.5-6M
- Work Voltage: DC-24V
- Feature: Waterproof
- Operating Speed: 0.3-6s(Depend On Arm Length)
- Insulation Level: F
- Operating Life: >5 Million
- Warranty: 2 Years
- Highlight: **Traffic Barrier Gate 1500r/Min,  
Outdoor Traffic Barrier Gate,  
Outdoor Car Parking Barrier Gate**



### More Images



## Product Description

### Product Description

#### Overview

#### Company Profile

### Product description

A boom barrier is designed for a range of max opening up to 6m. It is ideal solution for controlling vehicle traffic in parking lots, private entrances, industrial and public uses.

As a manufacturer, we have more than 10 year experiences on designing, producing and installing boom barriers. We have good quality control, so we vigorously test our boom barriers to make sure a longer life span.

### Application:

Office Buildings.

Shopping and mall Centers.

Vehicle Parks.

Distribution and Warehouse Facilities.

Commercial and Industrial Facilities.

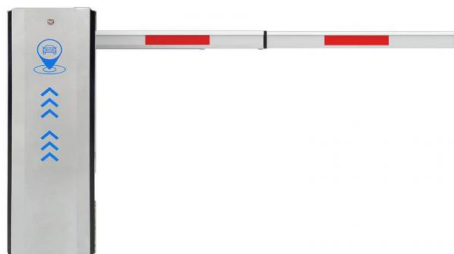
Government Buildings.

Stations

### Features

- 1) The movement adopts side stick installation, which is convenient for installation and compact in structure.
- 2) When power off, we can lift up the boom arm by hand directly
- 3) The main body of the movement is made of aluminum alloy, which is made by die-casting process, with reliable mechanical strength and beautiful appearance view, accurate size, good heat dissipation.
- 4) The core adopts gear reducer, which has high transmission efficiency and small power output loss; gear material quality scm421, carburizing heat treatment process, precision grinding, wear resistance, impact resistance, service life far beyond worm gear transmission structure.
- 5) The core adopts DC brushless motor, with large output torque and small volume, which can be realized by controller the speed can be adjusted at will. When the lowering and lifting poles are in place, the deceleration buffer can be realized to make the brake poles in place stably.
- 6) DC24V safety voltage is adopted for the motor to avoid electric shock accident caused by electric leakage and personal injury safety is more guaranteed.

### Parameters

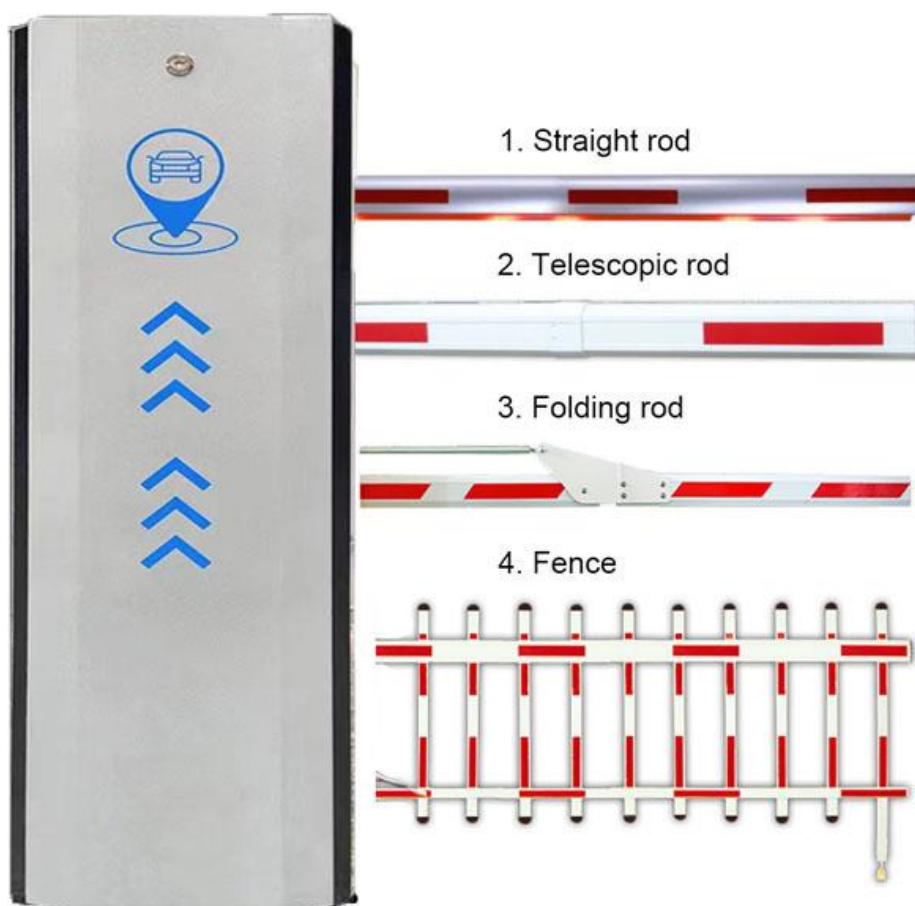
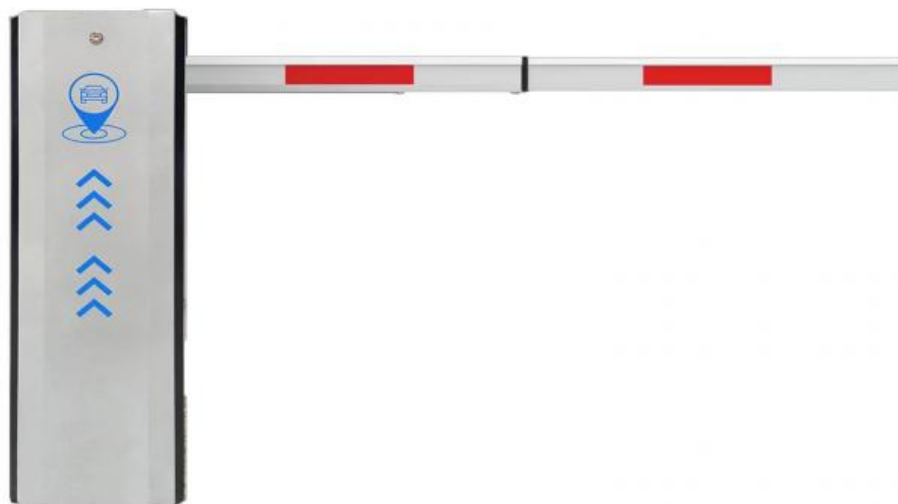


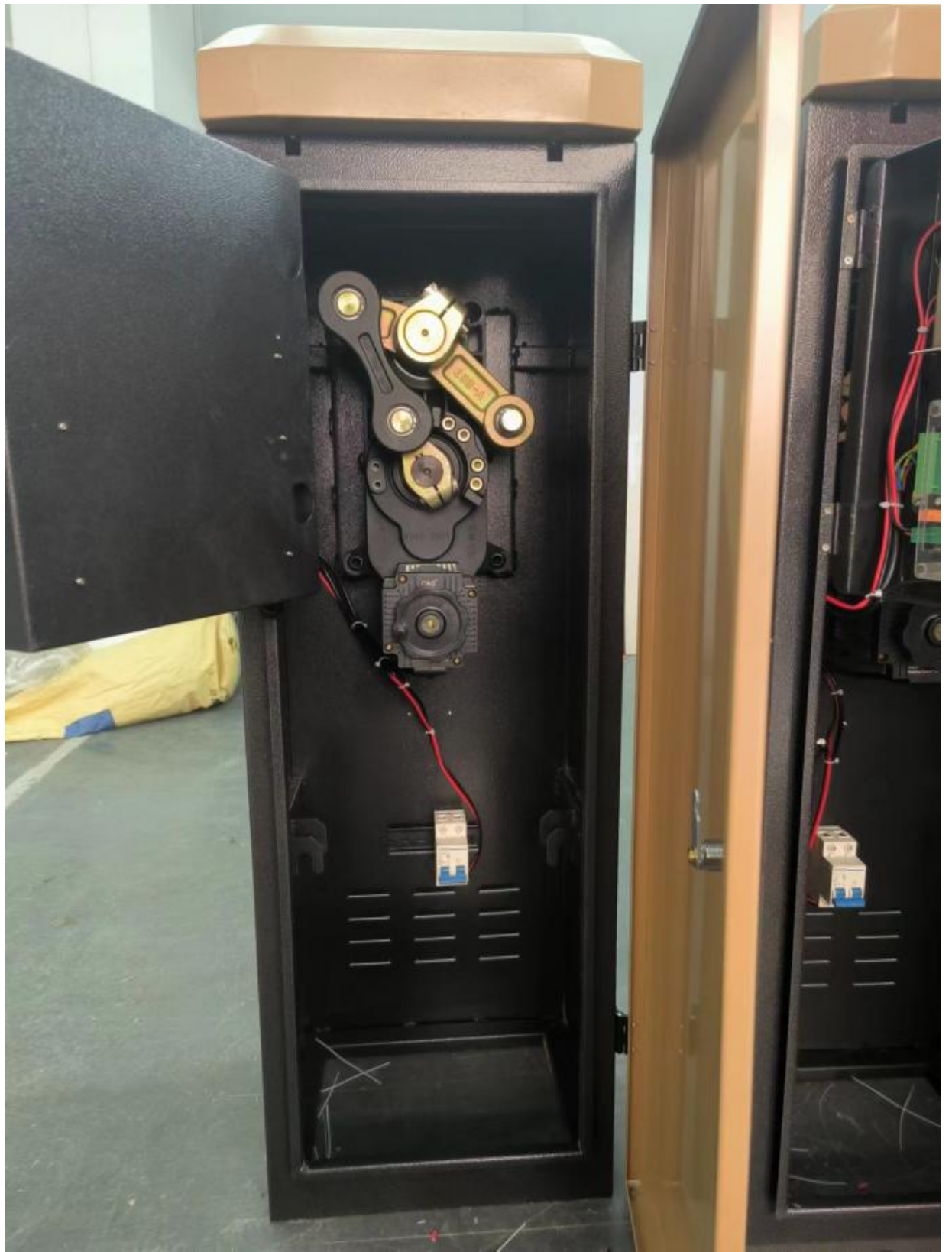
## Technical Parameters

Size	250*300*990mm
Power supply	DC 24V
Open/close speed	0.3s to 6s
Working temperature	-30~60°C
Rated power	140w
Motor rated speed	1500r/min
Humidity	<=85%
Remote control distance	30 m
Max boom length	6m
External power	220V 50/60HZ

## Product picture



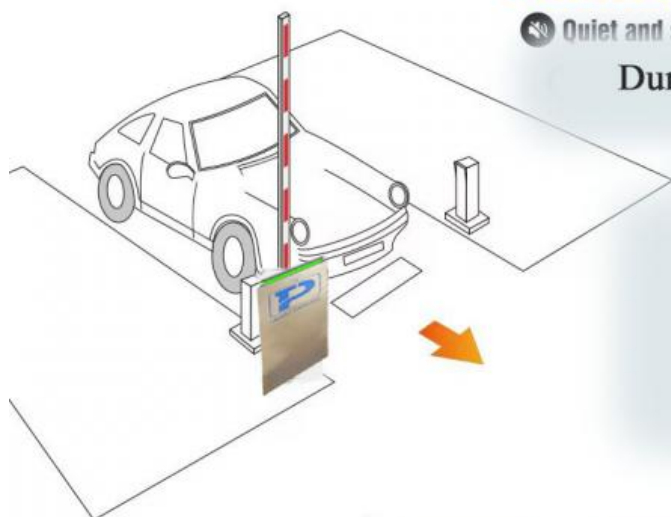




## Automatic Boom Barrier

🔊 Quiet and steady on opening and closing.

Durable,Cute Appearance



## Parking Barrier Gate



Easy Operation, Quiet,Steady





interior structure:



Big torque motor  
**Collision resistant motor**  
**Toll station motor**

**MCBF more 5 million times**

**Fast response**

Packing & Delivery

### The packaging of 18B unit motor



1.Put polyurethane foam inside



2.Cover with plastic and put the motor into the carton



3.Seal the carton with tape



To better ensure the safety of your goods, professional, environmentally friendly, convenient and efficient packaging services will be provided.

**Boom barrier projects**





Exhibition



Certification



**CBG<sup>®</sup> Shenzhen Chengbang Electromechanical Industry Limited**

+8615017905059    mok\_1s2cb\_cbg@163.com    automaticbarriersgates.com

Qiantou Xinxing Industrial Zone, Niushan community, Dongcheng District, Dongguan City