



Speed Adjustable Automatic Barrier Motor for Parking Barrier Access and Barrier Gate

Our Product Introduction

for more products please visit us on automaticbarriersgates.com

Basic Information

- Place of Origin: Guangdong, China
- Brand Name: CBG
- Model Number: 21B-5
- Minimum Order Quantity: 2 pieces
- Price: \$150.00/pieces 2-999 pieces

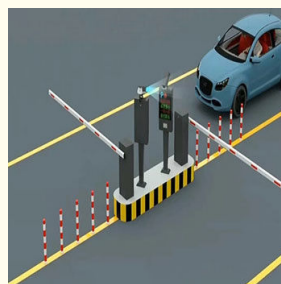
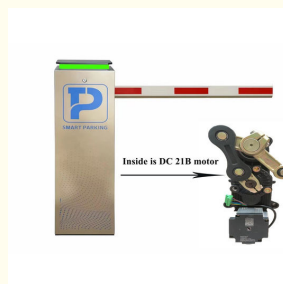


Product Specification

- Working Temperature: -30-60°C
- Power Supply: 140W
- Usage: Outdoor
- Boom Barrier Length: 1.5-6M
- Work Voltage: DC-24V
- Feature: Waterproof
- Operating Speed: 0.8-6s(Depend On Arm Length)
- Protection Grade: IP44
- Operating Life: >5 Million
- Warranty: 2 Years
- Highlight: 6m barrier gate motor, 140w barrier gate motor, 6m dc24v road gate motor



More Images



Product Description

Product Description

Overview

Company Profile

Product description

A boom barrier is designed for a range of max opening up to 6m. It is ideal solution for controlling vehicle traffic in parking lots, private entrances, industrial and public uses.

As a manufacturer, we have more than 10 year experiences on designing, producing and installing boom barriers. We have good quality control, so we vigorously test our boom barriers to make sure a longer life span.

Application:

Office Buildings.
Shopping and mall Centers.
Vehicle Parks.
Distribution and Warehouse Facilities.
Commercial and Industrial Facilities.
Government Buildings.
Stations

Features

- 1) The movement adopts side mounting, which is convenient for installation and compact in structure.
- 2) The main of the movement is made of aluminum alloy and made by die-casting process. It has reliable mechanical strength, beautiful appearance, accurate size and good heat dissipation.
- 3) The movement adopts gear reduction transmission, with high transmission efficiency and low power output loss; Gear material scm421, carburizing heat treatment process, precision gear grinding, wear resistance, impact resistance, service life far beyond worm gear transmission structure.
- 4) The movement adopts DC brushless motor, which has large output torque and small volume. The speed can be adjusted arbitrarily through the controller. When the rod is dropped and lifted in place, the deceleration buffer is realized, so that the brake rod is stable in place.
- 5) The motor adopts DC24V safety voltage, which avoids electric shock accidents caused by leakage and ensures personal safety.

Parameters



Technical Parameters

Power supply	DC 24V
Open/close speed	0.8s to 6s
Working temperature	-30~60°C
Rated power	100-120w
Motor rated speed	1500r/min
Humidity	<=90%
Remote control distance	30 m
Max boom length	6m
External power	220V 50/60HZ
Rated torque	0.64N.M

Product picture

Three Fastest speed



Fastest speed:0.6s



Fastest speed :1.5S



Fastest speed:3s



DURABLE MOTOR

- *Pure gear
- *Low noise
- *Adjustable speed
- *Beautiful appearance
- *Boom direction is exchangeable without replacing any parts

2 Remoters, 1 Receiver, 1 Main board
Remote control Distance :>30 m



Interior structure:



Pure copper permanent magnet rare motor



Pure copper motor winding



Inside is DC 21B motor

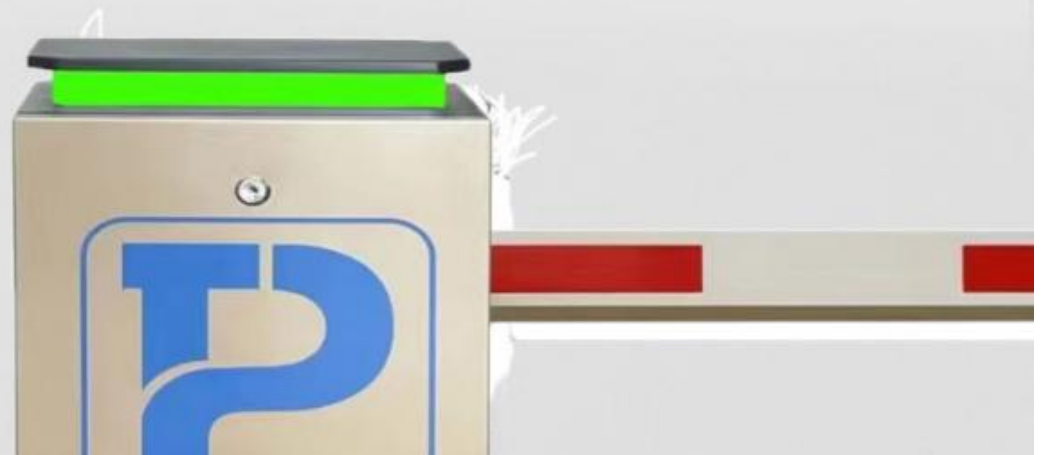


HIGH DEFINITION RECOGNITION

INTELLIGENT SECURITY

PARKING LOT GATE

SAFE | STABLE | RELIABLE | DURABLE | HIGH TORQUE

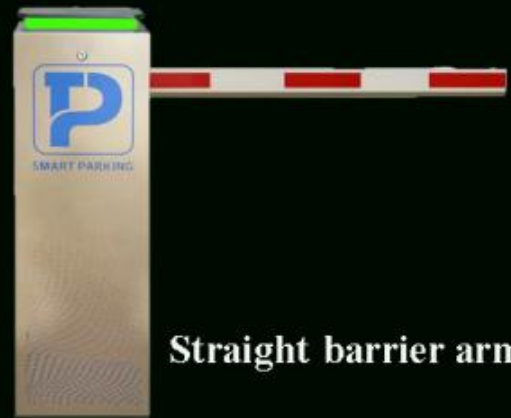




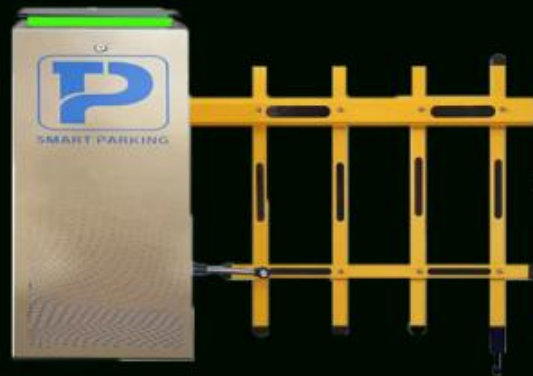
SOME KINDS OF ARM TO CHOOSE



90 Degree fold arm



Straight barrier arm



250 two fence barrier arm



interior structure:



Big torque motor
Collision resistant motor

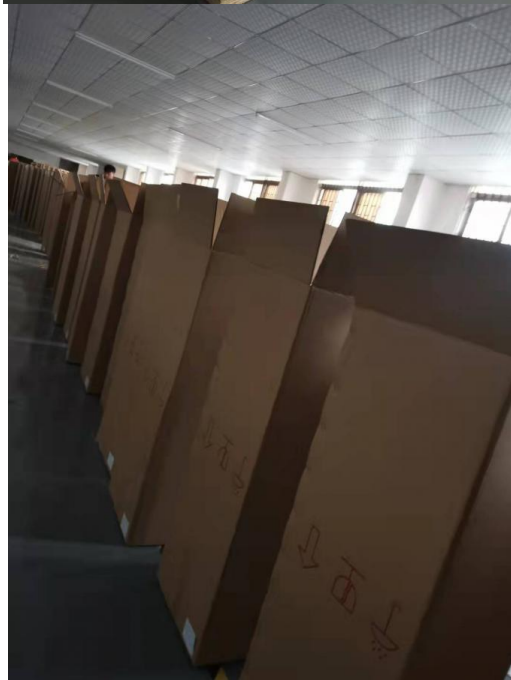
Toll station motor

**MCBF more 5 million
times**

Fast response

Packing & Delivery





To better ensure the safety of your goods, professional, environmentally friendly, convenient and efficient packaging services will be provided.

Boom barrier projects



Exhibition



Certification



CBG[®] Shenzhen Chengbang Electromechanical Industry Limited

+8615017905059 mok_1s2cb_cbg@163.com automaticbarriersgates.com

Qiantou Xinxing Industrial Zone, Niushan community, Dongcheng District, Dongguan City