



24V DC Brushless Motor For Parking Barrier Gate Long Lasting And Low Maintenance

Our Product Introduction

for more products please visit us on automaticbarriersgates.com

Basic Information

- Place of Origin: Guangdong, China
- Brand Name: CBG
- Model Number: 18B-ZY-15
- Minimum Order Quantity: 2 pieces
- Price: \$180.00/pieces 2-99 pieces



Product Specification

- Working Temperature: -30-60°C
- Power Supply: 140W
- Usage: Outdoor
- Boom Barrier Length: 1.5-6M
- Work Voltage: DC-24V
- Feature: Waterproof
- Operating Speed: 0.3-6s(Depend On Arm Length)
- Insulation Level: F
- Operating Life: >5 Million
- Warranty: 2 Years
- Highlight: Barrier Gate 24V DC Brushless Motor ,
Barrier 24V DC Brushless Motor ,
Parking 24V DC Brushless Motor

Three fastest speeds to choose



More Images



Packaging and accessories

Exquisite packaging complete accessories



Product Description

Product Description

Overview

Company Profile

Product description

A boom barrier is designed for a range of max opening up to 6m. It is ideal solution for controlling vehicle traffic in parking lots, private entrances, industrial and public uses.

As a manufacturer, we have more than 10 year experiences on designing, producing and installing boom barriers. We have good quality control, so we vigorously test our boom barriers to make sure a longer life span.

Application:

Office Buildings.

Shopping and mall Centers.

Vehicle Parks.

Distribution and Warehouse Facilities.

Commercial and Industrial Facilities.

Government Buildings.

Stations

Features

- 1)The movement adopts side stick installation, which is convenient for installation and compact in structure.
- 2) When power off, we can lift up the boom arm by hand directly
- 3)The main body of the movement is made of aluminum alloy, which is made by die-casting process, with reliable mechanical strength and beautiful appearance view, accurate size, good heat dissipation.
- 4)The core adopts gear reducer, which has high transmission efficiency and small power output loss; gear material quality scm421, carburizing heat treatment process, precision grinding, wear resistance, impact resistance, service life far beyond worm gear transmission structure.
- 5)The core adopts DC brushless motor, with large output torque and small volume, which can be realized by controller the speed can be adjusted at will. When the lowering and lifting poles are in place, the deceleration buffer can be realized to make the brake poles in place stably.
- 6)DC24V safety voltage is adopted for the motor to avoid electric shock accident caused by electric leakage and personal injury safety is more guaranteed.

Parameters

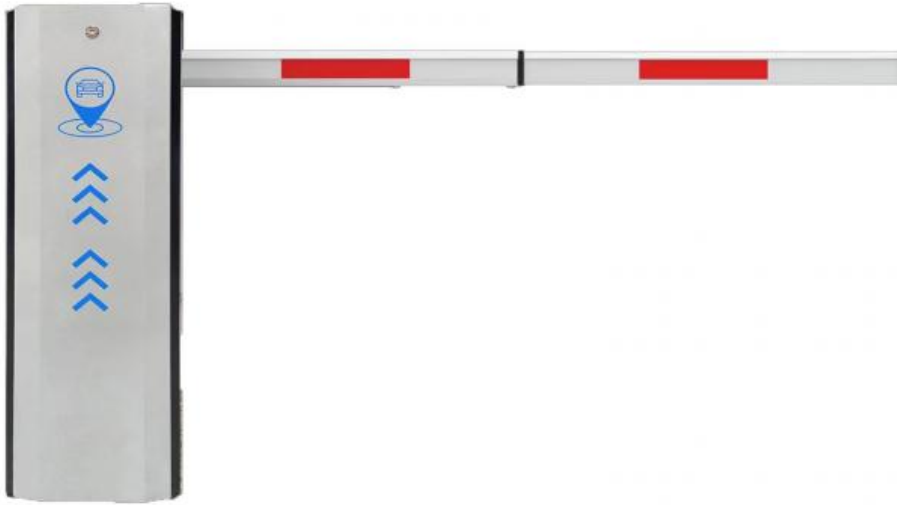


Technical Parameters

Power supply	DC 24V
Open/close speed	0.3s to 6s
Working temperature	-30~60℃
Rated power	140w
Motor rated speed	1500r/min
Humidity	<=85%
Remote control distance	30 m
Max boom length	6m
External power	220V 50/60HZ

Product picture







1. Straight rod



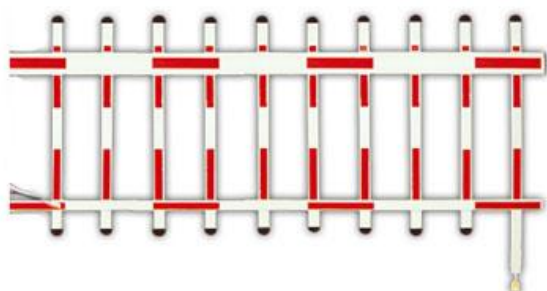
2. Telescopic rod



3. Folding rod



4. Fence

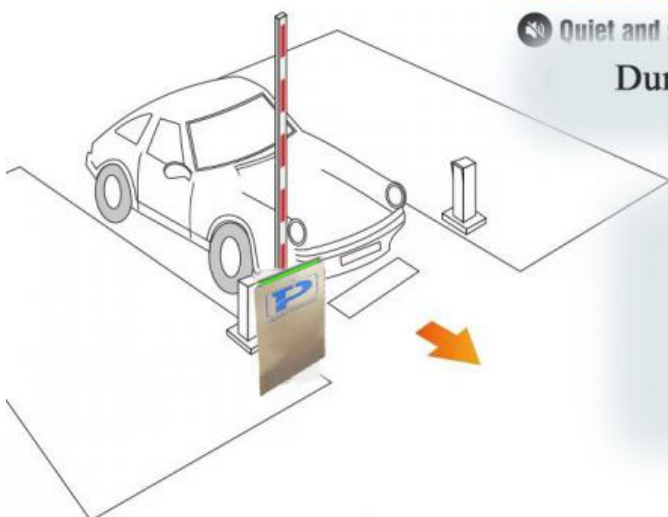


Automatic Boom Barrier



Quiet and steady on opening and closing.

Durable, Cute Appearance





Parking Barrier Gate



Easy Operation, Quiet, Steady



interior structure:



Big torque motor
Collision resistant motor
Toll station motor

MCBF more 5 million times

Fast response

Packing & Delivery

The packaging of 18B unit motor



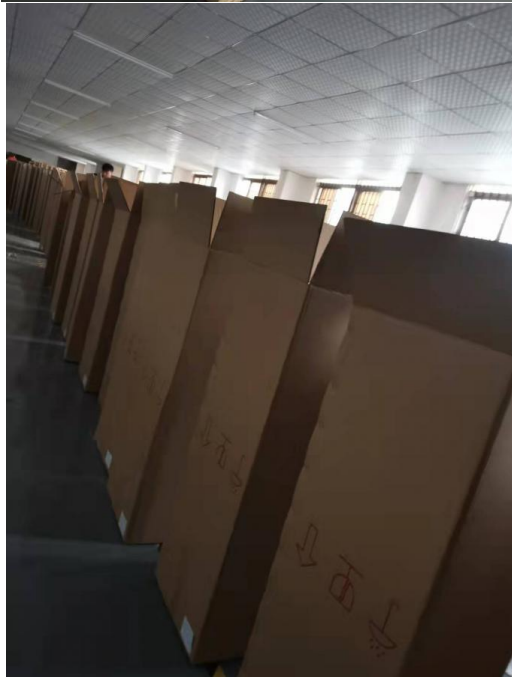
1.Put polyurethane foam inside



2.Cover with plastic and put the motor into the carton



3.Seal the carton with tape



To better ensure the safety of your goods, professional, environmentally friendly, convenient and efficient packaging services will be provided.

Boom barrier projects



Exhibition



Certification



CBG[®] Shenzhen Chengbang Electromechanical Industry Limited

+8615017905059 mok_1s2cb_cbg@163.com automaticbarriersgates.com

Qiantou Xinxing Industrial Zone, Niushan community, Dongcheng District, Dongguan City